

**UTSA**<sup>®</sup>

The University of Texas  
at San Antonio<sup>™</sup>

# Charting UTSA's Future

College of Business  
Advisory Board  
May 22, 2018



The logo for the University of Texas at San Antonio (UTSA) is located in the upper left corner. It consists of the letters "UTSA" in a white, bold, sans-serif font. Above the text are three wavy lines: the top one is orange and the two below it are blue. The entire logo is set against a dark blue background with a decorative, wavy white border on the left side.

UTSA<sup>®</sup>

---

# UTSA as a Catalyst for San Antonio

# San Antonio's University



# Boston has eight Carnegie R1 universities



**Boston has eight  
Carnegie R1 universities**



# Imagine in 10 Years...

- **NRUF/Carnegie R1**
- **> 45,000 students**
- **> 2,000 faculty**
- **\$400M in research expenditures**
- **Endowment of \$500M**
- **300 endowed chairs/professorships**
- **A destination of choice for students**
- **Urban-serving**
- **Hispanic-thriving**
- **3M square feet of new construction across 3 campuses**
- **25 annual faculty prestigious awards**
- **15 faculty in the national academies**
- **Commensurate athletics conference membership**

The logo for UTSA (University of Texas at San Antonio) is located in the upper left corner. It consists of the letters "UTSA" in a white, bold, sans-serif font. Above the text are three wavy lines: a top orange line and two blue lines below it. The entire logo is set against a dark blue background with a white scalloped edge on the left side.

UTSA®

---

# Six Themes to Chart our Course



**1. A Great  
Multicultural  
Discovery  
Enterprise**



**2. An  
Exemplary  
Urban-Serving  
University of  
the Future**



**3. World  
Engaged**



**4. Fostering  
Exceptional  
Student  
Experiences**



**5. Cultivating  
the Excellence  
of our People**



**6. Operational  
and  
Infrastructure  
Excellence**





Discovery  
Enterprise

Urban  
Serving

World  
Engaged

Student  
Experience

People  
Excellence

Process  
Excellence

## Initiatives

Presidential | Strategic | Tactical | Operational

## Projects

Project Teams | Project Management | KPIs | OPIs

The logo for UTSA (University of Texas at San Antonio) is located in the upper left corner. It consists of the letters "UTSA" in a white, bold, sans-serif font. Above the text are three wavy lines: the top one is orange, and the two below it are blue. The entire logo is set against a dark blue background with a white scalloped edge on the left side.

UTSA

---

# Peer Models of Excellence

# Peer Models of Excellence





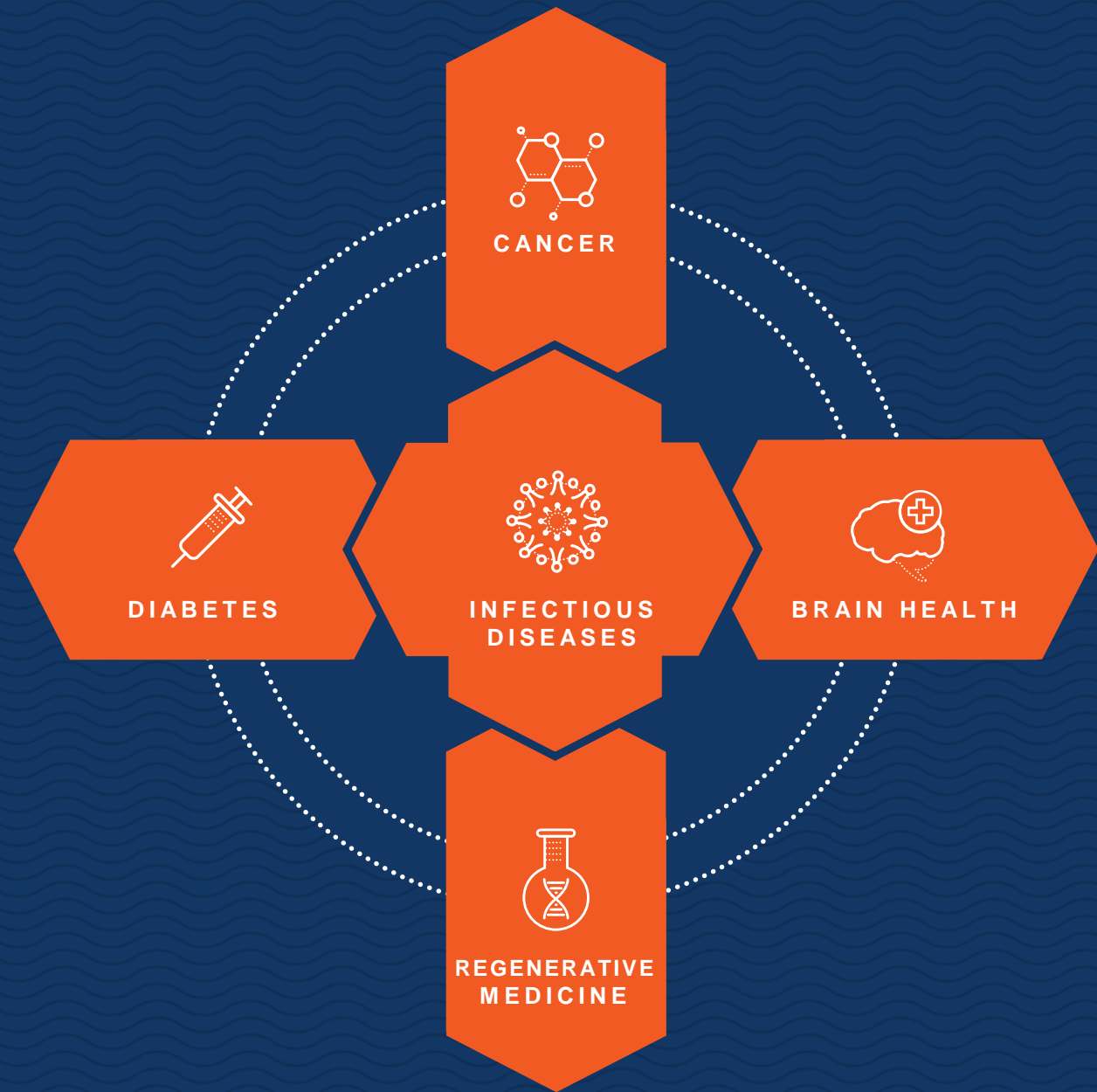
UTSA<sup>®</sup>

---

# Positioning UTSA as a National Leader in Biomedical Research & Development

Alignment with  
**San Antonio's**  
Bioscience Sector

---





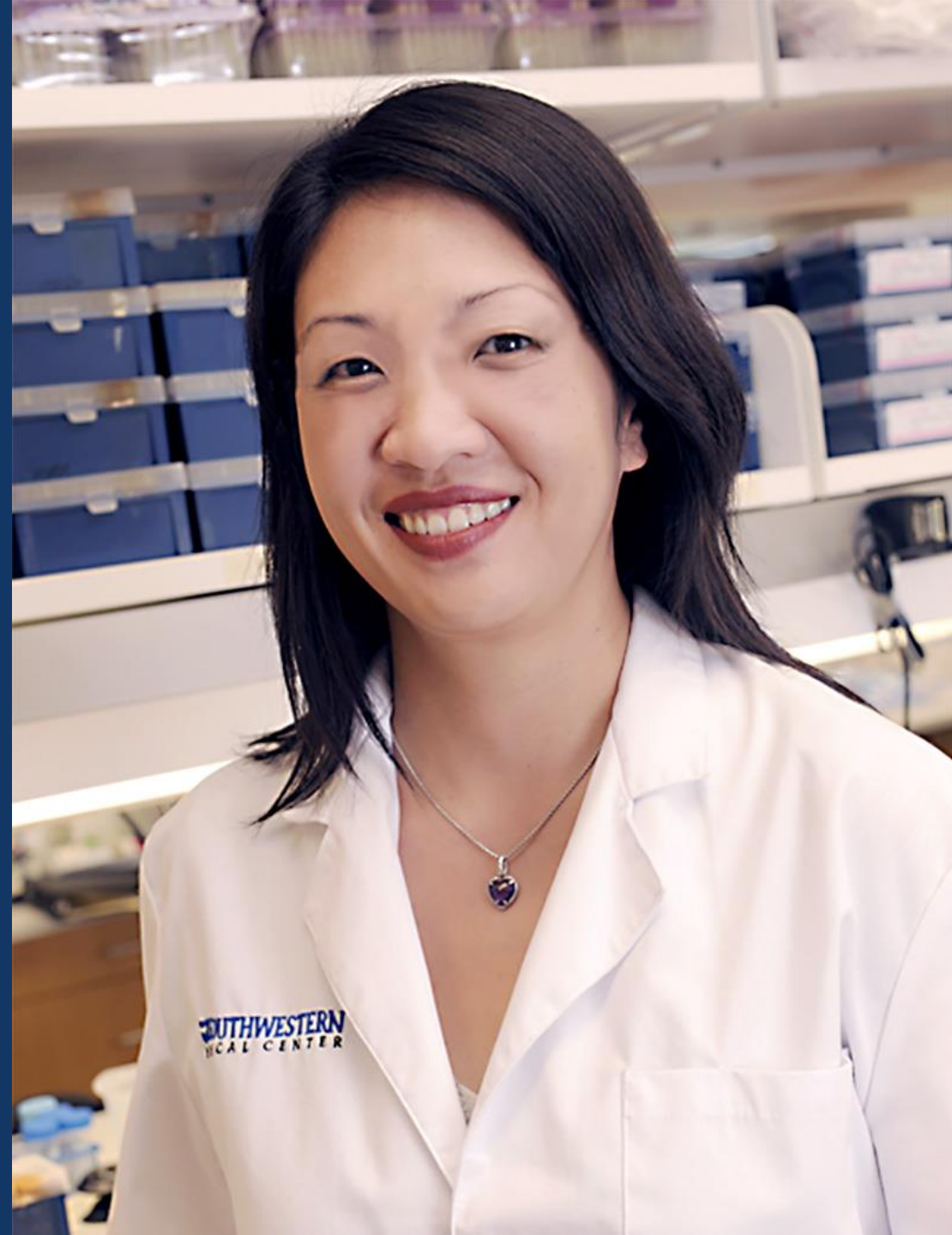
# Dr. Jenny Hsieh

Semmes Foundation Chair in Cell  
Biology

Professor of Biology

---

Fighting Brain Disease



# A New Partnership Emerging

**UTSA**



**UT Health**  
San Antonio



**TEXAS BIOMEDICAL  
RESEARCH INSTITUTE**



SOUTHWEST RESEARCH INSTITUTE



**BAMC**

San Antonio has

**3,300+**

MDs and PhDs

and more than

**\$1 billion**

in federal R&D  
expenditures







# San Antonio and its population genomics is the future of medicine

---

Precision Medicine

Drug Discovery and Delivery

Regenerative Medicine

Obesity

Neurodegenerative Disorders

Infectious Diseases





UTSA®

---

# Creating a Cyber Ecosystem at UTSA



# UTSA's Current & Future National Security Portfolio

Cybersecurity  
& Cloud Computing

Counter Terrorism

Election Security

Cyber Attack/  
Deterrence & Policy

Infectious Diseases  
& Biological Threats

Military Health  
& Wellness

Demographic Methods  
& Trends

Governance & Policy

Emergency Management  
& Communications

Border & Refugee Issues

Advanced Materials

Nanotechnology

Critical Infrastructure  
Protection

Robotics & UAVs

Analytics

High Performance  
Computing

Artificial Intelligence

Machine Learning

Data Visualization

High Tech Intelligence



# Dr. Nicole Beebe

Melvin Lachman Distinguished  
Professor in Entrepreneurship

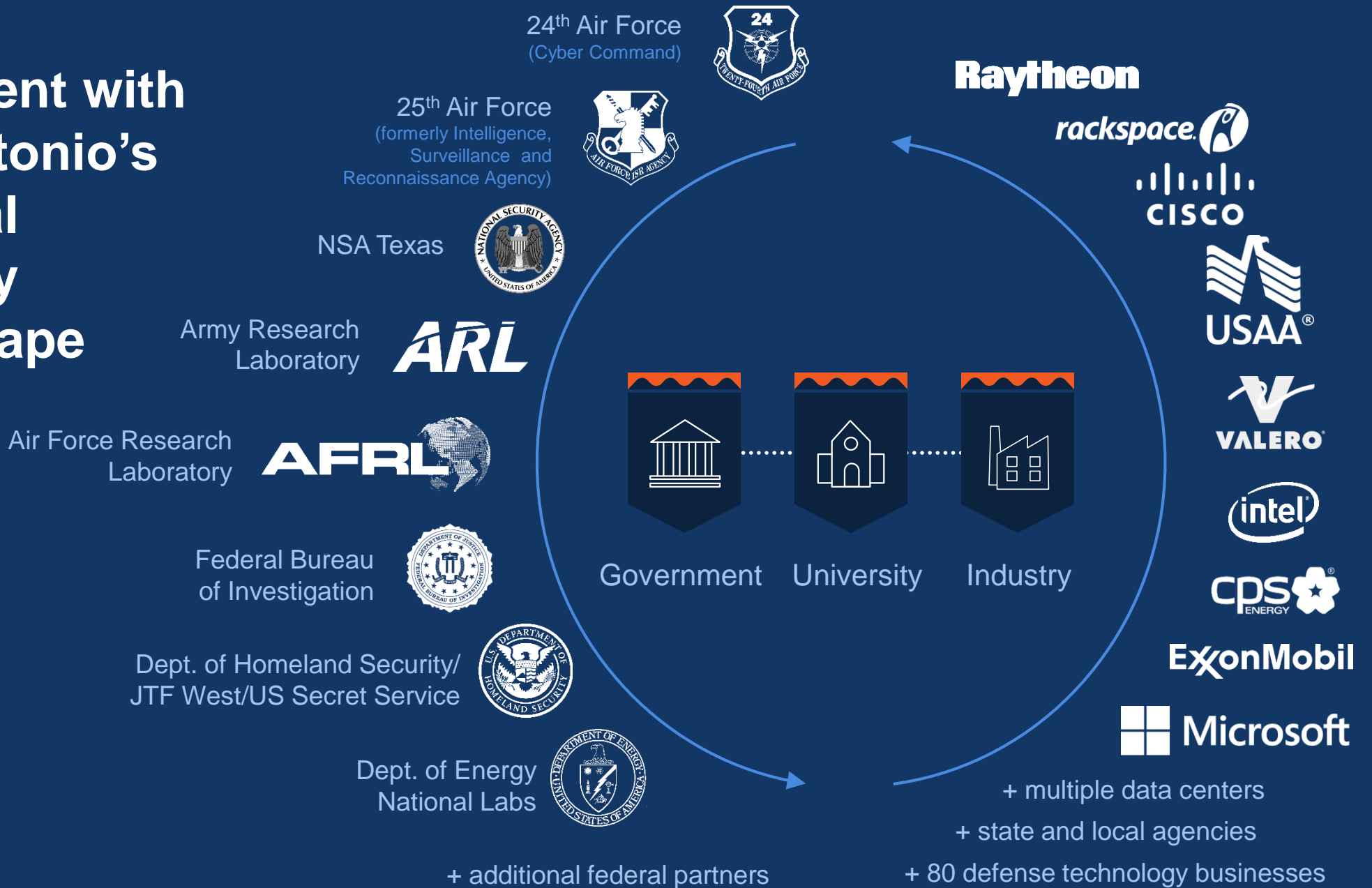
Associate Professor of Information  
Systems and Cyber Security

---

A Leader in the  
Cybersecurity Revolution



# Alignment with San Antonio's National Security Landscape



100,000  
square feet

5 floors

National  
Security  
Collaboration  
Center

UTSA

Loki Labs

Microsoft

noblis

Raytheon

IPSECURE

LGS  
INNOVATIONS

BUILD SEC  
FOUNDRY

IOMAXIS

POLARIS  
— ALPHA —

accenture

pwc

*In late stage discussions  
with 7 additional companies*



UTSA®

---

# A Visionary Downtown Campus



A New  
Vision





UTSA®

---

# School of Data Science and Digital Solutions

# School of Data Science and Digital Solutions

Centralizing UTSA's talent and resources in cyberscience, data science and data management into one powerful new school.

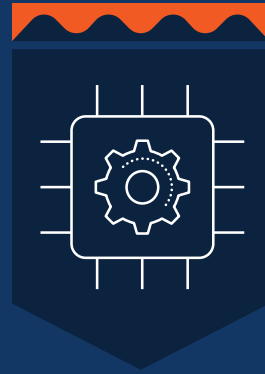


Columbia University  
Data Sciences Institute

Departments of  
Computer Science &  
Computer Engineering



Department of  
Statistics and Data Science



Department of Information  
Systems & Cyber Security



The Center of Infrastructure  
Assurance & Security



The Cyber Center for  
Security and Analytics



The Institute for  
Cyber Security



The Open Cloud  
Institute



The Texas Sustainable  
Energy Research Institute



UTSA®

---

# School of Entrepreneurship & Technovation

# School of Entrepreneurship & Technovation

---

Nurturing the big ideas that  
transform our world.



University of Utah  
Lassonde Entrepreneur Institute

Degree programs and professional certificates



Prototype labs



Entrepreneurship incubators



Creative spaces for startups, collaboration



Living/learning facilities



Meetups and workshops



Business model competitions



Commercialization programs



Innovation bootcamps



UTSA®

---

# Urban Education Institute

# Urban Education Institute

---

Tackling the grand challenges surrounding urban education through innovative partnerships and clinically rich approaches to school professional preparation.



University of Chicago  
Urban Education Institute



# Urban Education Institute



High quality research  
impacting education  
policy and practices



Development of a  
University Lab School



Partnerships  
with K-12 and  
community  
organizations



Leadership  
development



Residential experiences  
for undergraduate and  
graduate students,  
connecting theory  
to practice



Policy studies



UTSA<sup>®</sup>

---

# Urban Science Institute

# Urban Science Institute

---

Driving public policy and the  
future of San Antonio.



New York University  
Center for Urban Science & Progress

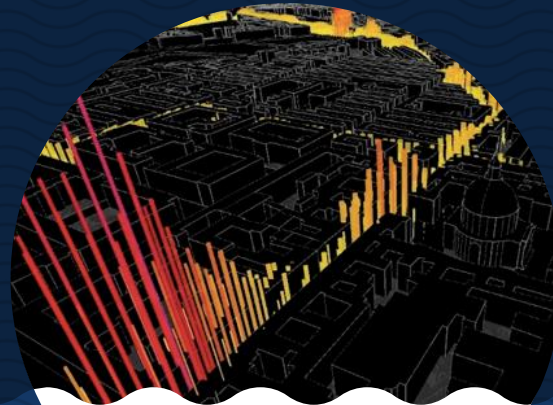
---

**University of Chicago**  
Urban Center for  
Computation and Data



---

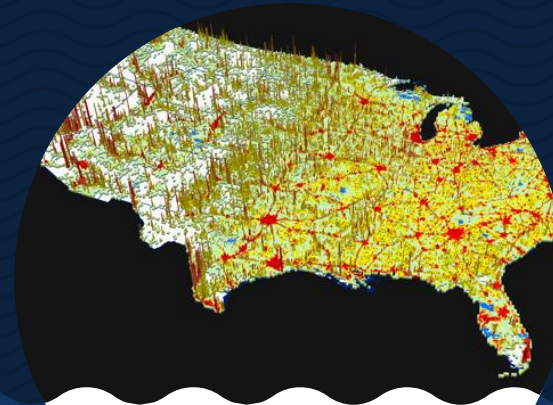
**MIT**  
Senseable City Lab



senseable city lab:::

---

**ORNL**  
Urban Dynamics  
Institute



---

**NYU**  
Center for Urban Study  
and Progress



# Let's Chart the Future Together

**UTSA**<sup>®</sup>

The University of Texas  
at San Antonio<sup>™</sup>

